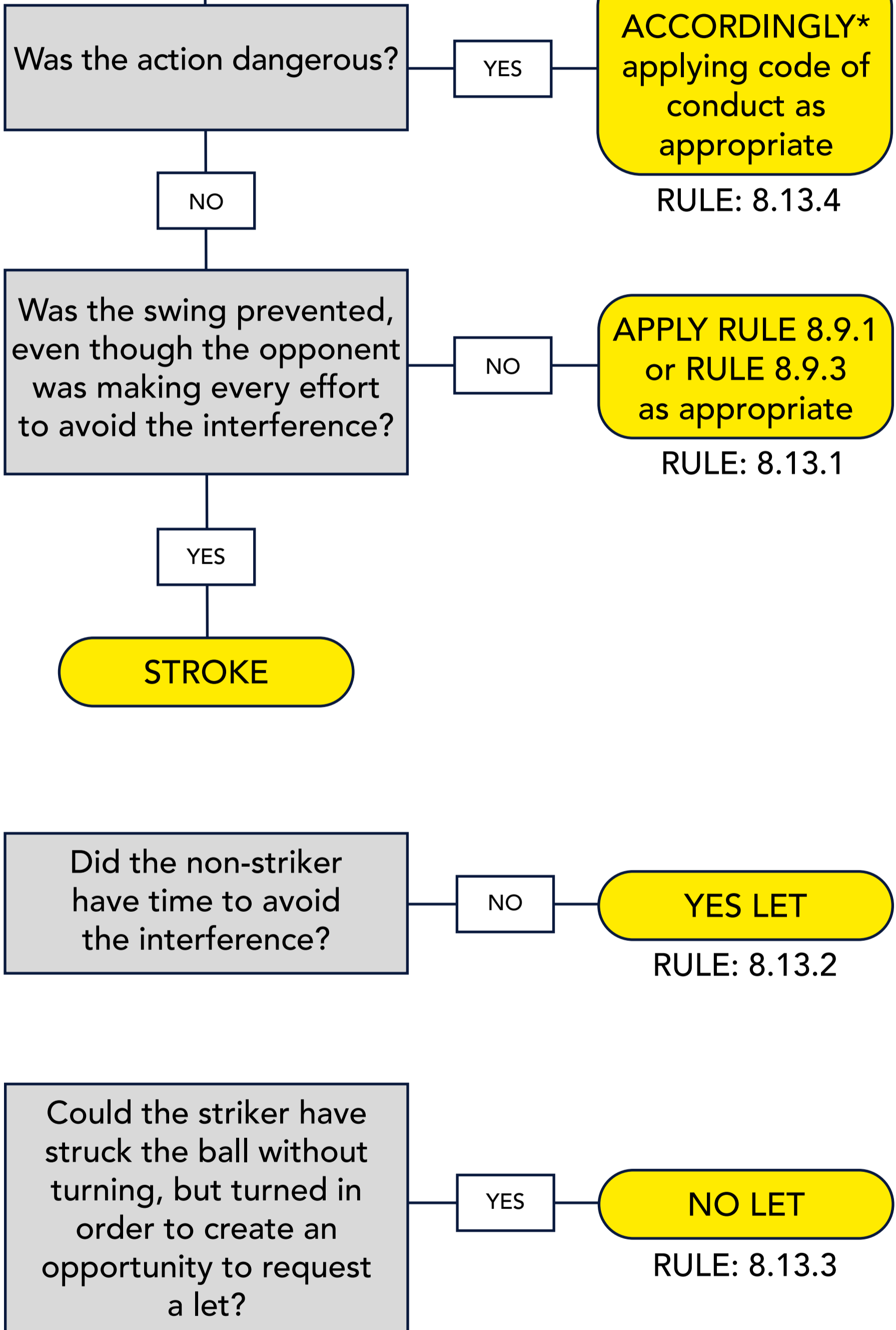


The below diagram shows the line of thinking if interference due to 'turning' is the reason a player asks for a let.

The striker encounters interference while turning, and could have made a good return:



\* RULE ACCORDINGLY in a situation that you think is dangerous play. It's important to consider the code of conduct depending on the severity of the situation. This will change for every scenario and requires you to read the situation and decide the most suitable outcome.